

A heavy-duty residential valve made specifically to handle demanding situations



1" Angle



1" Globe

Built to work. Built to last. The Hunter HPV is a valve that's both. Because this is a valve with every feature you could ask for to attain long-lasting, heavy-duty performance. Rigid internal support to prevent stress failure in high pressure situations. A unique porting system with a superior ability to filter dirty water that also closes slowly to suppress water hammer. Low-

flow capability for effective drip applications. A captive diaphragm, solenoid plunger and bonnet screws, so lost parts are never a problem. There's even a flow control option that assures efficient operation when accurate flow management is required. For residential and light commercial applications, the Hunter HPV plastic valve is built to take whatever your site is dishing out.

Features & Benefits



Heavy-duty Hunter solenoid

Long-life, reliable operation

Captive solenoid plunger

No more lost parts when servicing

Internal manual bleed

Keeps valve box dry

Optional flow control

Adjust the flow of each zone on a system

Captive bonnet screws

No more lost parts

Self-flushing filtering system

Handles dirty water with ease

Fully supported diaphragm

Tolerates high pressure installations

Models

HPV-100G – 1" plastic globe valve

HPV-101G – 1" plastic globe valve, with flow control

HPV-100A – 1" plastic angle valve

HPV-101A – 1" plastic angle valve, with flow control

Dimensions

- Globe Valve: 5¼" H x 4½" L x 2¾" W
(13 cm H x 11 cm L x 7 cm W)
- Angle Valve: 5½" H x 3½" L x 2¾" W
(14 cm H x 9 cm L x 7 cm W)
- Female inlet/outlet: 1" NPT, BSP or Slip

Operating Specifications

- Flow: .4 to 40 GPM
(0.09 to 9.1 m³/hr; 1.5 to 151 l/min)
- Pressure: 20 to 150 PSI
(1.4 to 10.3 bars; 138 to 1034 kPa)
- Heavy-duty solenoid: 24VAC, 370mA inrush current, 190mA holding current, 60 cycles; 475mA inrush current, 230mA holding current, 50 cycles

Options Available

- Reclaimed water identification handle (part # 269205)
- DC latching solenoid (part # 458200)
- Solenoid conduit cover (part # 464322)
- Drip Irrigation Valve Kit (part # PCZ-100)

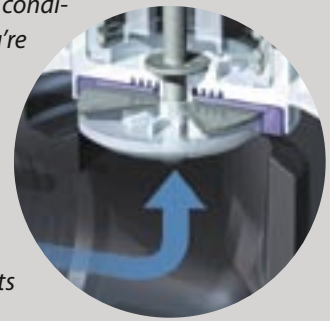


A Valve You Can Depend On

For reliability, turn to the valve that assures you of dependable operation time after time. For quality, turn to the valve whose solid construction is your guarantee of effective performance today as well as tomorrow. For a valve that's built to work and built to last, turn to the Hunter HPV.

It's a Dirty Job, but Hunter Valves Can Do It

Hunter valves are specifically engineered to handle conditions where clean water is not an option. When you're drawing from a well, lake, reservoir, or any other source of dirty water, turn the job over to a Hunter valve. Our HPV's unique filtering mechanism is flushed with turbulent water every single time the valve opens and closes to ensure consistent, reliable operation. Its filter also works to eliminate valve failure, with an innovative design that protects the upper diaphragm chamber from debris.



HPV Pressure Loss in PSI

GPM	1" Globe	1" Angle
1	1.0	1.0
5	2.0	1.5
10	2.0	1.7
15	1.8	1.4
20	2.5	1.5
25	3.6	2.0
30	5.5	2.9
35	7.7	4.2
40	10.5	5.7

Charts based on full-open flow control position.



SPECIFICATION GUIDE

EXAMPLE: **HPV - 101G - S - DC**

MODEL HPV	FEATURES	OPTIONS FACTORY INSTALLED	OPTIONS USER INSTALLED
	100G = 1" Globe Valve, no Flow Control 101G = 1" Globe Valve, with Flow Control 100A = 1" Angle Valve, no Flow Control 101A = 1" Angle Valve, with Flow Control	S = Slip x Slip (Globe Only) B = BSP Threads	R = Reclaimed Water Identification Handle DC = DC Latching Solenoid CC = Solenoid Conduit Cover

Hunter Industries Incorporated • The Irrigation Innovators

1940 Diamond Street • San Marcos, California 92078 • TEL: (1) 760-744-5240 • FAX: (1) 760-744-7461
www.HunterIndustries.com

© 2005 Hunter Industries Incorporated

P/N 700283

LIT-112

6/05