

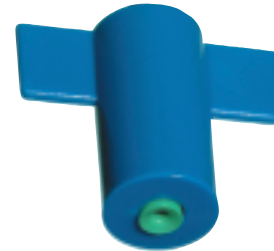
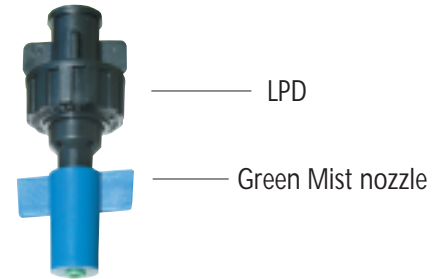
Green Mist



Green Mist

The double purpose emitter for misting & irrigation over propagation benches

- Uniform coverage
- Ideal droplet size prevents drift of excessively fine mist
- No dripping during operation
- Undisturbed and symmetrical water distribution (no deflection or "dead corners")
- Leakage Prevention Device for perfect pulsed operation
- Low cost



Green Mist

Technical data:

- Operating pressure: 2 - 4 bar
- Flow rate: 30 - 42 l/h (see chart)
- Wetted diameter: 1.2 m
- Filtration requirements: 120 mesh (130 microns)

Installation instructions:

- Height of units above bench: 1.0 - 1.2 m
- Max. spacing between units on lateral: 1.0 m
- Max. spacing between laterals: 1.0 m
- Max. distance of lateral from bench edge: 0.2 m

Flow vs. pressure

Pressure (bar)	2.0	2.5	3.0	3.5	4.0
Flow (l/h)	32	35	38	41	44



Schematic layout of PVC installation

