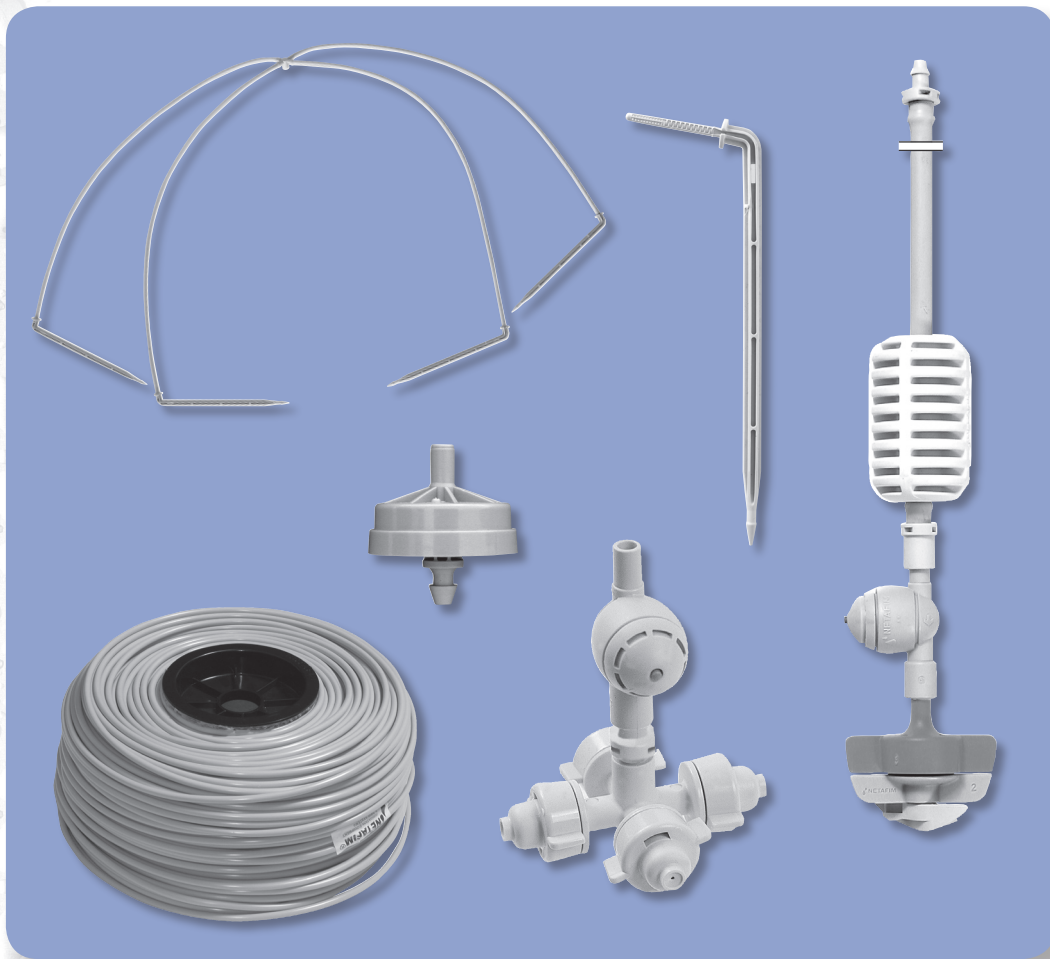


Greenhouses Irrigation

The Gray Line

- Introducing Gray Line – Netafim's comprehensive new line of irrigation products, designed and engineered specifically for greenhouse growers in all parts of the world.
- One hundred percent lightproof – Netafim researchers have developed an advanced plastic that is fully impervious to light. Following years of extensive field testing in a wide spectrum of rigorous environments, the new substance carries Netafim laboratory endorsement and is now available for greenhouse applications.



IRRIGATION SYSTEMS

 **NETAFIM**™

Solar energy for cold climates

Growers need to know that their greenhouses are absorbing the maximum amount of sun. It is widely accepted that black is a color that blocks solar energy. By replacing black irrigation pipes with a comprehensive range of gray irrigation equipment, maximum use of solar power will be possible. Instead of being wasted, energy will be absorbed and directed into promoting crop growth.

Keeping control in warm climates

Because gray line installations do not absorb heat and maintain a neutral temperature, crops are irrigated with water delivered at the desired temperature.

Gray Line Features

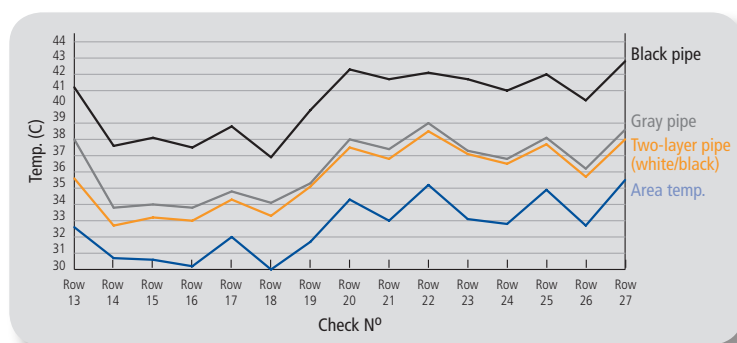
- Broad range of pipes : 3*5, 4*6.5, 16/4, 20/4 and more
- Drippers:
 - PC drippers, pressure compensating in a wide range of flow rates
 - CNL (anti-drain) optional feature
 - Arrow drippers
- Misters – CoolNet
- Micro-sprinklers – SpinNet

Gray Line Accessories

- Anti-drain valves, spikes, 4 outlet flood manifold and others
- Connectors

Water temperature in differently colored pipes

(electronic device - MMS3000)



SpinNet with A.D. valve, weight, tube and connectors



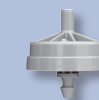
CoolNet with A.D. valve



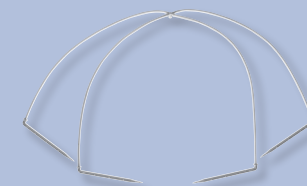
Arrow Drippers and spikes



PC Dripper



"Spiders" assembly products



Gray pipes in different sizes

