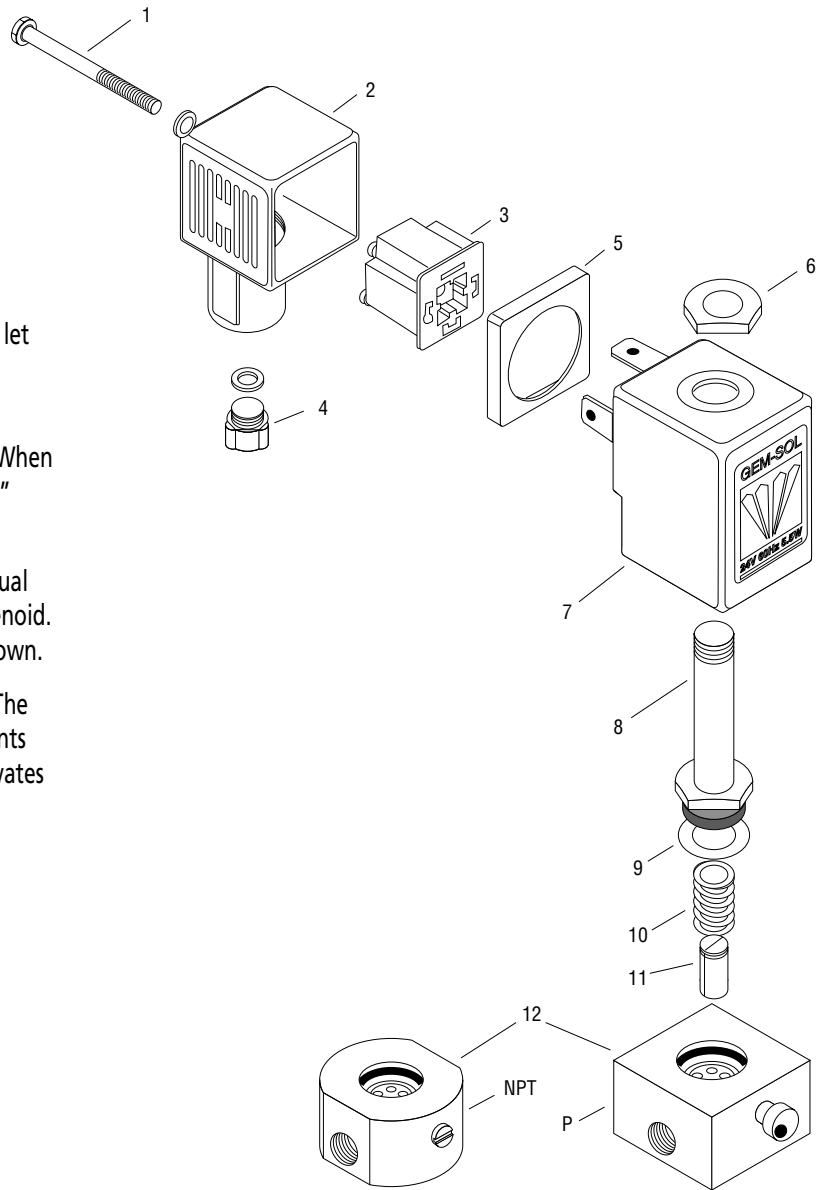


# BACCARA SOLENOID COMPONENTS and Electric Hook-up

## ASSEMBLY INSTRUCTIONS

1. Loosen bolt (1).
2. Pull hub assembly off.
3. Push (3) out with screwdriver through access port (remove 4).
4. Connect wires to (1) and (2).
5. Reassemble, the hub can be turned 90 degrees to let port (4) face sideways.
6. If no conduit tubing is used, seal opening (4) with silicone, to avoid dirt or moisture from entering. When using conduit, remove the adapter to connect 1/2" conduit. **Note:** Brass solenoids use (3/8") adapter.
7. The base of the stainless steel solenoid has a manual override; a screwdriver is used to activate the solenoid. **Off position:** the little mark on the slot points down.
8. The brass solenoid base has a knob with a mark. The solenoid is deactivated when the mark or dot points down. Turning the knob or screw 90 degrees activates the solenoid.



## LIST OF PARTS

1. Bolt	5. Rubber	9. Seal
2. Junction box	6. Coil, sleeve nut	10. Spring
3. Junction	7. Coil hub (or wire lead)	11. Plunger
4. Adapter 3/8" w/seal	8. Sleeve	12. Body or base